

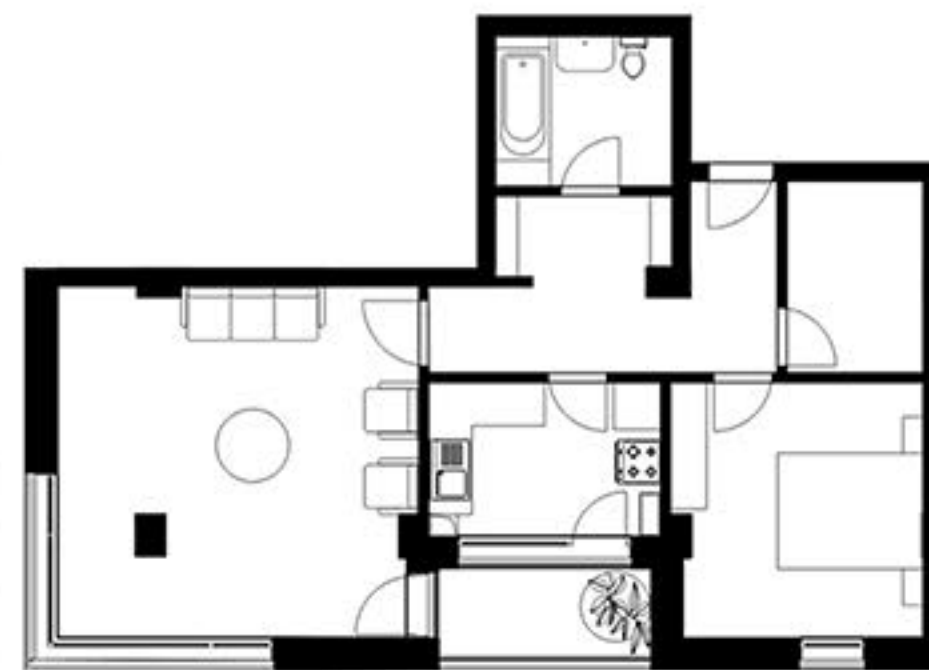


INCEPAND CU:  
**45.124 EUR**  
(TVA 5% inclus)





Ap. 3 camere  
Suprafata utila: 83.82 mp + 11.18 mp logie  
Pret: 91.778 EURO (TVA 5% inclus)



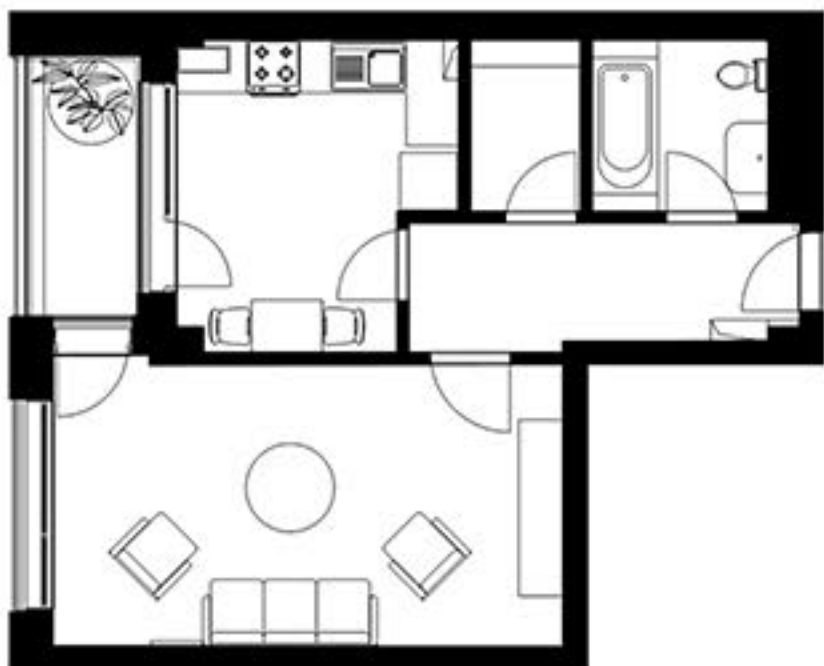
Ap. 2 camere  
Suprafata utila: 62.10 mp + 3.90 mp logie  
Pret: 66.173 EURO (TVA 5% inclus)



 TREPTE

Real Estate Development





<b>Garsoniera</b>
<b>Suprafata utila: 41.85 mp + 3.90 mp logie</b>
<b>Pret: 45.124 EURO (TVA 5% inclus)</b>

<b>Ap. 4 camere</b>
<b>Suprafata utila: 109.42 mp</b>
<b>Pret: 93.126 EURO (TVA 5% inclus)</b>



 **TREPTE**

Real Estate Development



Proiectul Trepte Panorma, Brasov, str Dimitrie Anghel 24, este format din 9 unitati locative plus un spatiu comercial la parter

Amplasat intr-un cartier modern de case individuale  
Acces rapid spre centrul orasului si zona comerciala  
Acces la rețeaua de transport public- 50m  
3 km de Centrul Vechi  
4 km de Centrul Civic



Contact:

Tel: 0730 081 706  
e-mail: vanzari@trepte.ro  
website: www.trepte.ro

 **TREPTE**  
Real Estate Development